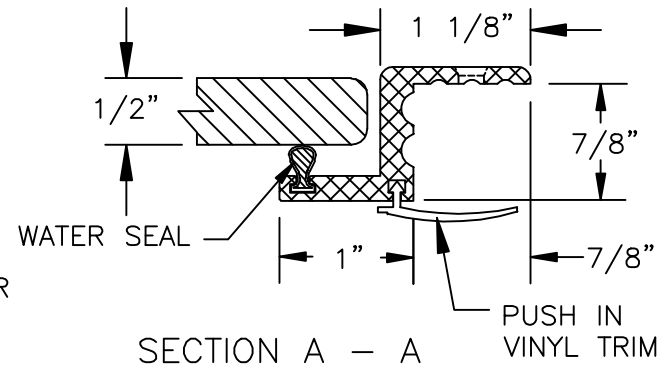
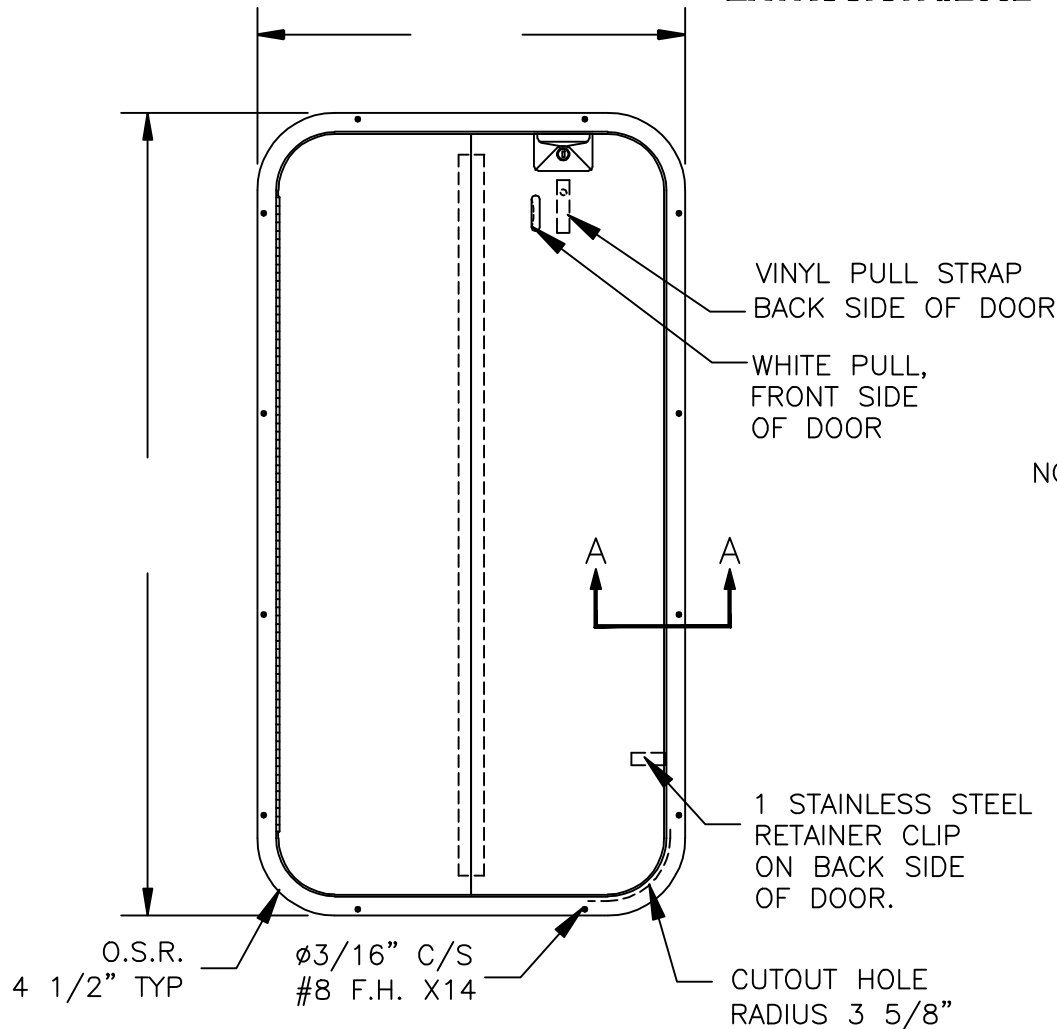


BIFOLD CABIN ENTRY DOOR

**POWDER COATED ALUMINUM FRAME
EXTRUSION #2062**



- NOTES:
1. BENT ALUMINUM POWDER COATED FRAME WITH SLIDE IN WATER SEAL
 2. DOOR OPTIONS: PLEXIGLASS OR STARBOARD
 3. STAINLESS STEEL PIANO HINGE
 4. BLACK VINYL STRAP, BACK SIDE OF DOOR
 5. MOBELLA SECURE, LATCH
 6. #100-3084 WHITE PULL NP405-022
 7. VINYL INTERIOR TRIM SUPPLIED
 8. PLEASE SPECIFY WHICH SIDE THE DOORS HINGE ON

NOTES: DIMENSIONS ARE OUTSIDE MEASUREMENTS
(CUTOUT DIMENSIONS CAN BE DETERMINED
BY REDUCING OUTSIDE DIMENSIONS BY 1 3/4")



COMPANY NAME:

MODEL:
*

TITLE:
CABIN DOOR

DRAWN BY: *Randy Beckwith*

SHEET 1 OF 1

TOLERANCES: ±1/32"

SIZE DWG. A

DATE: 1/2007

SCALE: NTS

PART#: SAMPLE 14

CAD/CAM #: *