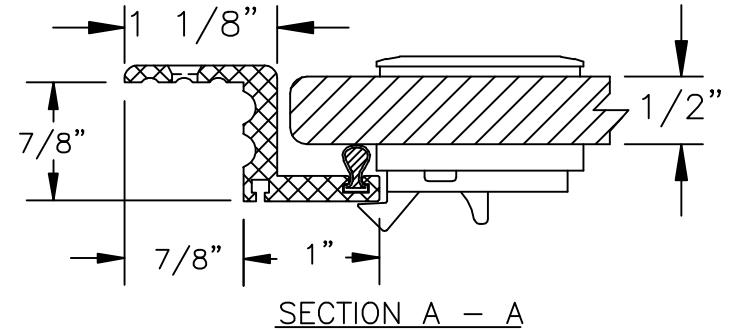
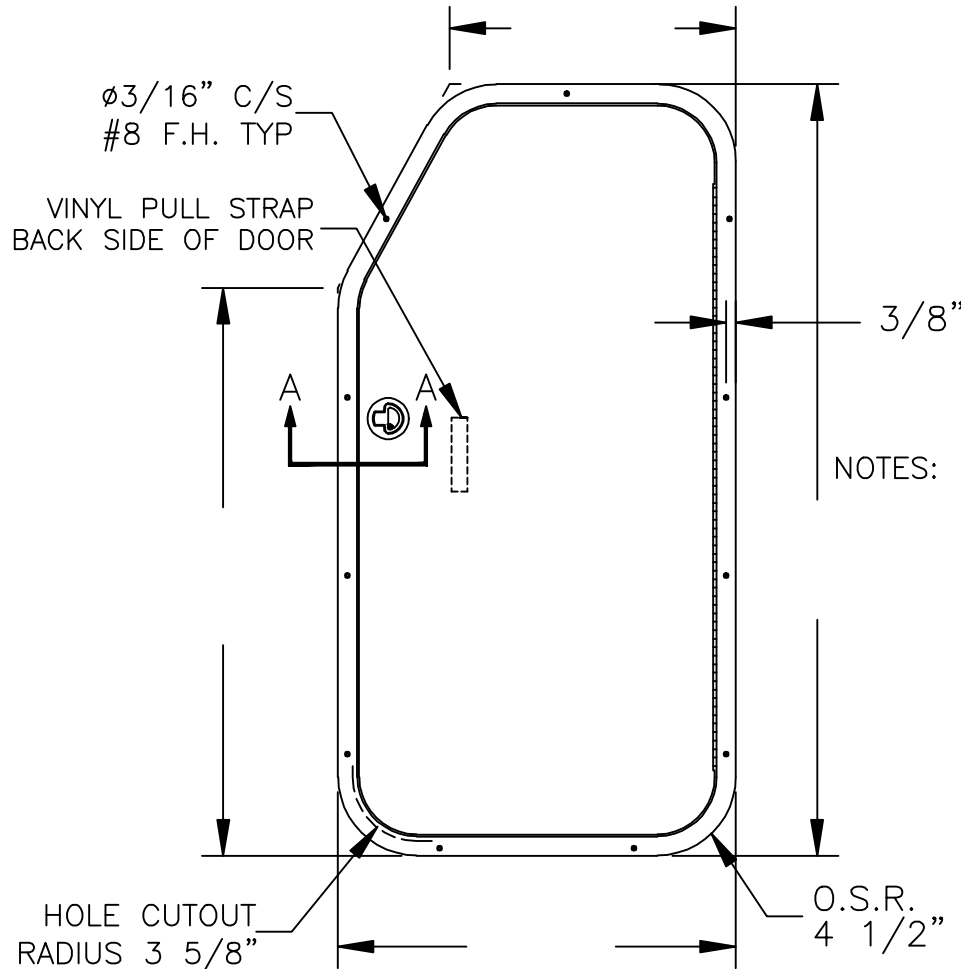


CENTER CONSOLE DOOR, FIVE SIDED

**POWDER COATED ALUMINUM FRAME
EXTRUSION #2062
WITH FLUSH PULL LATCH**



- NOTES: 1. DIMENSIONS ARE OUTSIDE MEASUREMENTS (CUTOUT DIMENSIONS CAN BE DETERMINED BY REDUCING OUTSIDE DIMENSIONS BY 1 3/4")
2. BENT ALUMINUM POWDER COATED FRAME WITH SLIDE IN WATER SEAL
 3. DOOR OPTIONS: PLEXIGLASS OR STARBOARD
 4. STAINLESS STEEL PIANO HINGE
 5. LOCKING FLUSH LATCH IN STAINLESS STEEL OR PLASTIC
 6. LOUVERS CAN BE ADDED FOR VENTILATION



COMPANY NAME:

MODEL:

*

**TITLE: CENTER CONSOLE
DOOR, FIVE SIDED
W/ FLUSH PULL LATCH**

DRAWN BY: *Randy Beckwith* SHEET 1 OF 1

TOLERANCES: ±1/32" SIZE DWG. A

DATE: 1/2007 SCALE: NTS

PART#: SAMPLE 23

CAD/CAM #: *